

LYS350-Limit switch box

Valve Position Monitor

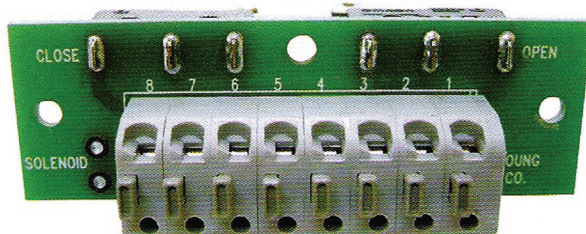
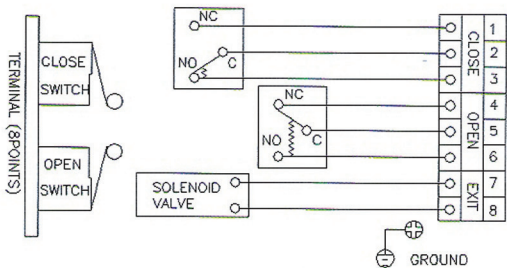


- A simple structure
- Lighter weight and better portability compared to other products
- Easy assembly to ISO actuator

Product Specifications

Specifications		Standard	Option
Enclosure		IP67, NEMA 4, 4X	
Ambient temperature		-20°C~80°C	
Cable conduit		PT 1/2	NPT 1/2, PF 1/2
Switch		Mechanical switches × 2(2SPDT)	
Rating voltage	AC	250V 3A, 125A 5A	
	DC	250V 0.2A, 125V 0.4A, 30V 4A, 14V 5A, 8V 5A	
Terminal		8point	
Material		ABS, PC	
Weight		200g	

Dimensional Structure



Dimensional Structure

