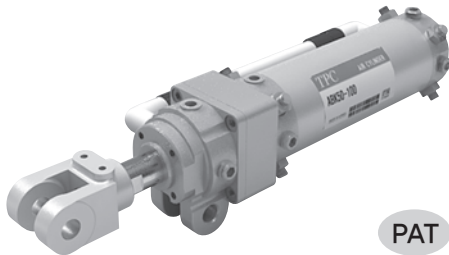


Series **ABK**

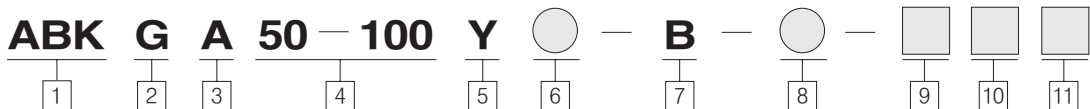
Taper (Forward Motion or Backward Motion) Clamp Cylinder

Bore Size(mm) : Ø50, Ø63



- LOW MAGNETIC RESISTANT AUTO SWITCH ATTACHING AVAILABLE
- AIR CUSHION BASICALLY BUILT-IN (ROD- SIDE, HEAD-SIDE)
- MAKING SERIES FOR CLEVIS WIDTH
- NO NEED OF BELLOWS IN APPLICATION STRONG COIL SCRAPER
- POSSIBLE TO SELECT PIPING LOCATION

How to Order



1 Actuator Brake Clamp Cylinder

2 Magnet

Blank : None
G : Standard magnetic resistant type
P : Intense magnetic resistant type

3 Clevis Width

A : 16.5mm
B : 19.5mm

4 Bore Size(Ø)-Stroke(mm)

Ø50 - 50,75,100,125,150
Ø63 - 50,75,100,125,150
※ Possible to produce middle stroke beside standard stroke

5 End Bracket

Blank : None
Y : Double Knuckle Joint

6 Mount

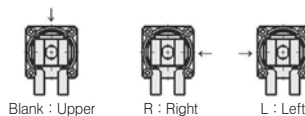
B : Limit switch mount
D : Cam mount
19 : Foot

7 Locking Position

B : Backward locking
F : Forward locking

8 Port Position

Blank : Upper
R : Right
L : Left
※ "R" & "L" type are only available when locking is performed forwardly(F)



9 Auto Switch

Blank : None
W3 : Standard magnetic resistant reed switch
W2P : Standard magnetic resistant solid state switch
P70R, P74R : Intense magnetic resistant reed switch

10 Number of Auto Switches

Blank : 2 pcs
S : 1 pc
N : N pcs

11 Lengh of Lead Wire

L : 3m
Z : 5m

Notices for products

Please fully understand the notices prior to utilization, and refer to safety notice and common notice.

Specifications				
	Bore Size		Ø50	Ø63
	Cylinder	Operation Method		Double Motion Extension Rod
Applied Fluid		Air		
Guaranteed Operating Pressure		1.5MPa		
Maximum Operating Pressure		1.0MPa		
Minimum Pressure Applied		0.2MPa		
Ambient and Applied Fluid Temperature		5°C ~ 60°C		
Applied Piston Speed		50~500mm/s		
Cushion		Both Side Air Cushion		
Lubrication		Non-Lube		
Stroke Length Tolerance		0/+1.0		
Speed Controller		Built-in		
Mounting		Double Clevis		
Lock		Lock Operating Method		Spring Lock
	Note 1) Lock Releasing Pressure (for No Loading)		0.2Mpa More Than	
	Note 2) Lock Direction		Single Direction (Forward or Backward)	
	Note 3) Lock Keeping Strength N (Maximum Static Load)		1,519(155Kg) ± 3%	1,974(200Kg) ± 3%
	Lock Applied Purpose		Drop Prevention, Location Maintaining	

Note 1) For smooth lock release in case of load applied, recommended to use over 0.5MPa pressure.

Note 2) Regardless of lock direction (forward or backward), specification is the same.

Note 3) Lock keeping strength is maximum static load, and recommended to use less than 40% of maximum static load for safety.

Weight				(Unit : kg)
	Bore Size		50	63
	Cylinder	Basic Weight (0 st')		F:1.46, B:1.42
Increased Weight Per 25 Stroke		0.11	0.13	
2-Spin Knuckle Joint (Pin Inclusive)			0.36	
Limit Switch Attaching Board			0.22	
Cam Mount			0.15	
Foot			0.22	

* Auto switch Attachment is exempted.

Forward Lock : F
Backward Lock : B

Calculation Method

ex) ABKGA50-100Y-B

- Basic Weight(Ø50 Backward lock) : 1.42 Kg
- Additional Weight (per 25 st') : 0.11 * 4 = 0.44 Kg
- 2-Spin Knuckle Joint : 0.36 Kg

Total : 2.22 kg

ACP

APM

AS

AX

AM2

AM

AL
ALXAQ
ADQAQ2
ADQ2AJ
AJM

ABK

ACK1

NSK

AG

NGQ

AGX
GX

NP

ADR

AMR

NDM

ARD

NST

AST

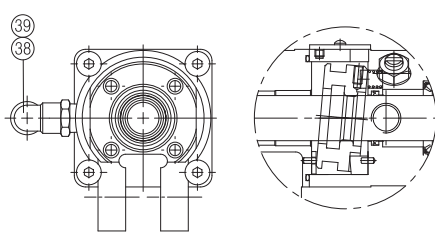
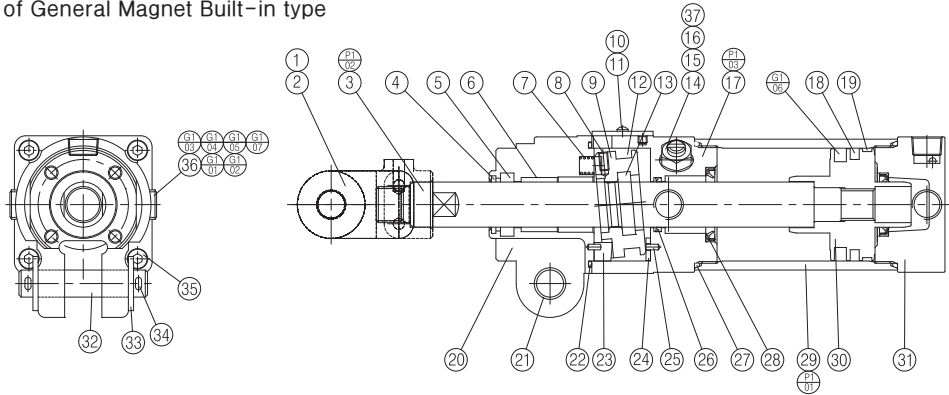
ASTH

NLCD

NLCS

Structure Map

Backward Direction Lock Type (ABKG***-B)
In Case of General Magnet Built-in type



Backward Direction Lock Type TYPE
(ABK***-F)

In Case of Strong Magnet Built-in Type
(ABKP***-*)

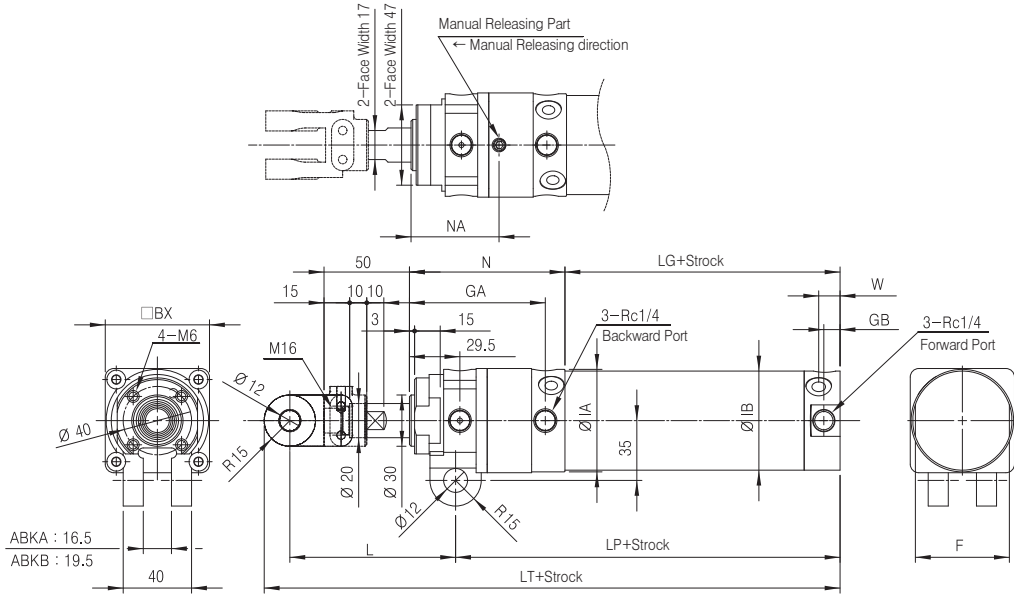
Major Component List

No	Component	Material Property	Quantity	Remark
1	Y-Knuckle	Carbon Steel	1	
2	Pin	Spring Steel	1	
3	Piston Rod	Carbon Steel	1	Hard Chromite
4	Coil Swapper	Phosphor Bronze	1	
5	Rod Packing	NBR	1	
6	Bush	Copper Apply	1	
7	Spring	Spring Steel	2	Zinc Chromite
8	Bolt	Carbon Steel	1	
9	Shoe	Carbon Steel	1	Silver Nitrate Coloring
10	Manual Releasing Cover	Aluminum Alloy	1	
11	Bolt	SUS	2	
12	Shoe Piston Packing	NBR	1	
13	Shoe Rod Packing	NBR	1	
14	Nut	Carbon Steel	4	Zinc Chromite
15	Gasket	NBR	4	
16	Cushion Valve	Carbon Steel	2	Zinc Chromite
17	Middle Cover	Aluminum Alloy	1	White Alumite
18	Piston Packing	NBR	1	
19	Wearing	Resin	1	
20	Rod Cover	Aluminum Alloy	1	White Alumite
21	Bush	Copper Apply	2	
22	O Ring	NBR	1	Zinc Chromite
23	Hinge Pin	Carbon Steel	1	
24	Propping Plate	SUS	1	
25	Pin	Spring Steel	4	
26	Rod Packing	NBR	1	

번호	Component	Material Property	Quantity	Remark
27	Tube Gasket	NBR	2	
28	Cushion Packing	NBR	2	
29	Tube	Aluminum Alloy	1	
30	Piston	Aluminum Alloy	1	White Alumite
31	Head Cover	Aluminum Alloy	1	White Alumite
32	Pin	Carbon Steel	2	Zinc Chromite
33	Washer	Carbon Steel	4	Zinc Chromite
34	Separate Pin	Steel Wire	4	
35	Bolt	Carbon Steel	4	
36	Plug	Carbon Steel	7(5)	Forward Direction 5EA
37	Speed Cone Valve	Carbon Steel	2	Zinc Chromite
38	One Touch Fitting		2	Forward Direction Only
39	Tube		1	Forward Direction Only
G1-01	Plug	Copper Apply	2	
G1-02	Switch Rail	Carbon Steel	1	Zinc Chromite
G1-03	Spring Washer	Spring Steel	2	Zinc Chromite
G1-04	Bolt	Carbon Steel	2	Silver Nitrate Coloring
G1-05	Plug	Carbon Steel	2	
G1-06	Magnet	Magnetic Substance	1	
G1-07	Washer	Carbon Steel	2	Zinc Chromite
P1-01	Tube	Aluminum Alloy	1	Hard Alumite
P1-02	Piston Rod	Carbon Steel	1	Hard Chrome Plating
P1-03	Middle Cover	Aluminum Alloy	1	White Alumite
P1-04	Piston A	Aluminum Alloy	1	White Alumite
P1-05	Magnet	Magnetic Substance	1	
P1-06	Piston B	Aluminum Alloy	1	White Alumite

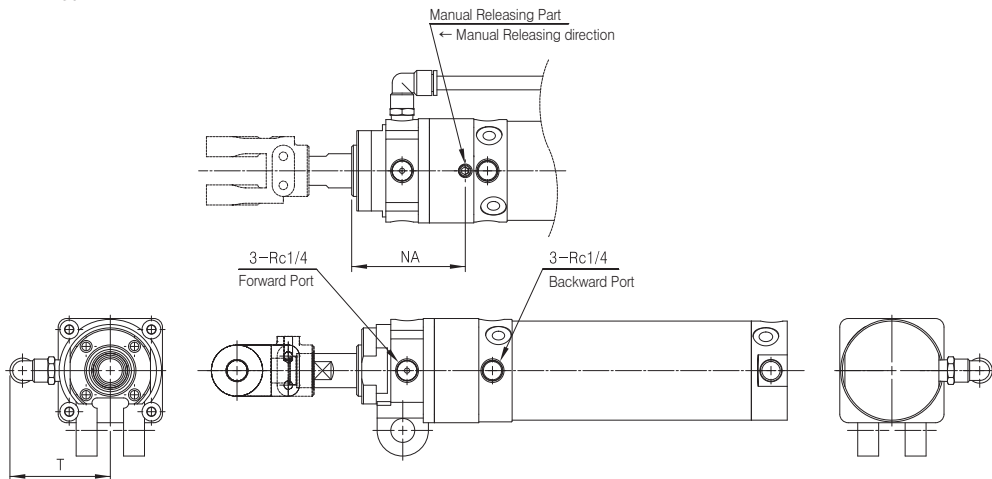
Fitting Dimension Drawing

Backward Lock Type (ABK***-***-B)



Bore Size	F	GA	GB	Ø1A	Ø1B	□BX	L	N	NA	W	LG	LP	LT	LG	LP	LT
														In Case of Strong Magnetic Resistant System		
Ø50	55	79.5	9.5	60	58	61	97	91	51.5	12.5	61	125	237	63	127	239
Ø63	69	79.5	9.5	74	72	75	97	91	50.8	12.5	61	125	237	63	127	239

Forward Lock Type (ABK***-***-F)



Bore Size	T	NA
Ø50	60	66.5
Ø63	66	67

* Dimensions not indicated are identical to forward lock type.

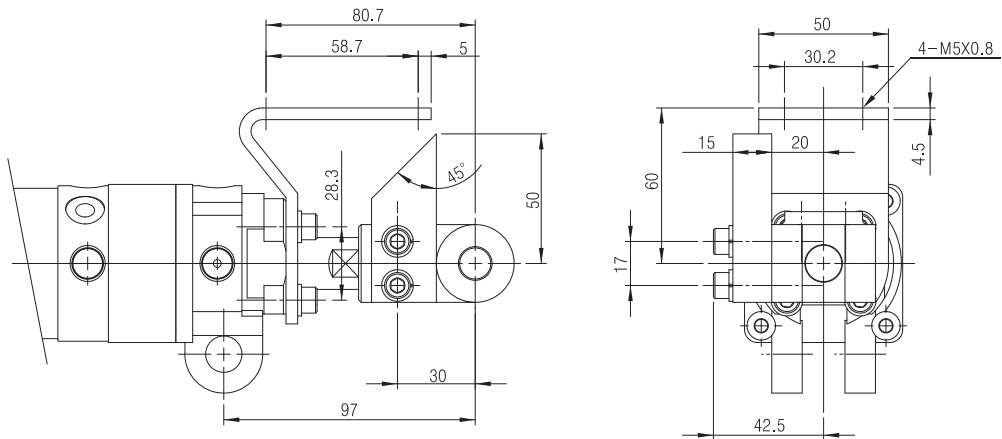
* Limit switch attaching board, foot and cam mount are identical to TCK Ø50 and Ø63 specification.

- ACP
- APM
- AS
- AX
- AM2
- AM
- AL
- ALX
- AQ
- ADQ
- AQ2
- ADQ2
- AJ
- AJM
- ABK**
- ACK1
- NSK
- AG
- NGQ
- AGX
- GX
- NP
- ADR
- AMR
- NDM
- ARD
- NST
- AST
- ASTH
- NLCD
- NLCS

Series ABK

Fitting Dimension Drawing

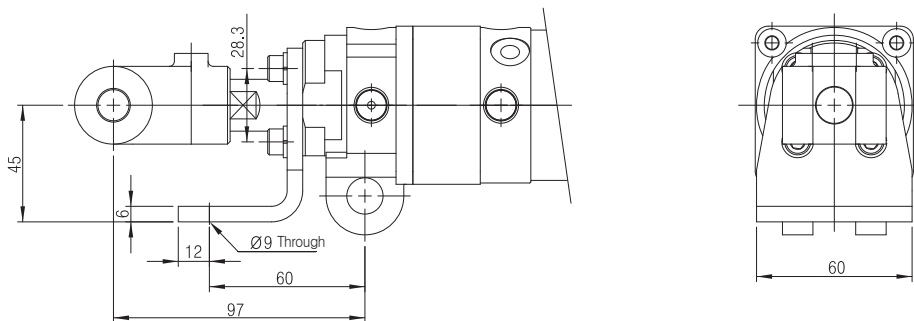
Limit Switch Attaching Board/Cam Mount



Name of Component	ABKA	ABKB	Remark
Limit Switch Attaching Board	TCKM040-48-16070A		Both Available for Ø50 and Ø63
Cam Mount	TCKM040-42-16070		

- ※ Possible to attach limit switch attaching board and dog fittings at arbitrary location with removing hexagonal hole attaching bolt.
- ※ Application of cam mount is available for 97mm attaching hold size.

Foot



Name of Component	ABKA	ABKB	Remark
Foot	TCKA-19		Both Available for Ø50 and Ø63

Notices for products

Please fully understand the notices prior to utilization, and refer to safety notice and common notice.

Warning

Features

- 1 Since lock keeping strength indicates the capability maintaining maximum static load, it is recommended to use under 40% of keeping strength for safety and active operation in application of this product (for suing lock unit).
- 2 This cylinder does not aim for interim stop but aims for locking in unexpected situation during stop situation, so that long term utilization of this cylinder in interim stop within running may cause damage or functional loss of lock unit.
- 3 Do not refill fuel in lock releasing port. It may cause functional loss of lock unit.
- 4 It is possible to cause maximum 1mm strike shift to lock direction in case of long term application (with loading), which is caused by lock unit features.
- 5 Do not disassemble / assemble lock unit. It may cause severe fault to lock operation.

Warning

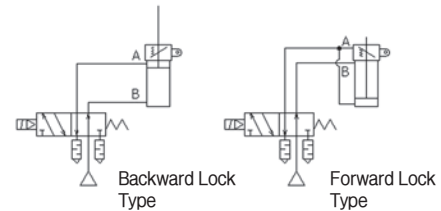
Selection

- 1 During backward motion, lock type does not have binding force for forward motion of piston, and vice versa for backward motion. Therefore, be cautious to select a product for each direction.

Warning

Circuit

- 1 Do not use close center valve for interim stop.
- 2 Connect A port of solenoid valve to lock releasing port, B port to piston operating port. Lock releasing valve is not additionally needed, and common exhaust manifold may cause operation error by backpressure. Therefore, do not use common exhaust manifold.



Warning

Installation

- 1 For easy installation of cylinder, carry out installation with mounting manual releasing bolt. It may prevent damage of safety and lock unit during installation.

Warning

Operation

- 1 Since lock is released by manual releasing bolt for delivery, please use after removing a bolt. If supplying over 0.1MPa air to lock releasing port in unloaded condition, manual releasing bolt is easily removed. (Piston ord is possibly moving forward for forward lock type).
 - * Please carry out removal of manual releasing bolt as it is indicated in manual releasing cover.
- 2 Please restore B port air before restart from lock condition in unexpected situation. If lock is released in advance, it may cause unexpected accident.
- 3 Please adjust air cushion and speed controller along user's configuration.

ACP

APM

AS

AX

AM2

AM

AL
ALXAQ
ADQAQ2
ADQ2AJ
AJM

ABK

ACK1

NSK

AG

NGQ

AGX
GX

NP

ADR

AMR

NDM

ARD

NST

AST

ASTH

NLCD

NLCS