

PR 8~9 Series

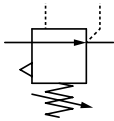
Regulator 1 1/4", 1 1/2", 2"

Air preparation unit

PR 8~9 Series



Symbol



How to Order

PR ⑧ — * ⑭ — P

1 2 3 4 5

① Series(Regulator Unit)

② Body Size
8 : 1 1/4, 1 1/2
9 : 2

③ Thread
Blank : Rc
N : NPT
G : G(PF)

④ Port Size

12 : 1 1/4
14 : 1 1/2
20 : 2

⑤ Accessory Option

Blank : No Gauge
P : Gauge

Specifications

Port size	PR 8	1 1/4, 1 1/2
	PR 9	2
Fluid	Pressed Air	
Max.operating pressure(MPa)	10bar (1.0MPa)	
Proof pressure(MPa)	15bar (1.5MPa)	
Ambient and fluid temperature (°C)	-5~60(With no freezing)	
Regulating range	0,5~8,5bar(0,05~0,85MPa)	
Construction	Internal pilot relieving type (pilot air is always bleeding)	
Gauge port	1/4	

PL 8~9 Series

Lubricator 1 1/4", 1 1/2", 2"

Air preparation unit

PL 8~9 Series



Symbol



How to Order

PL ⑧ — * ⑭ B — M

1 2 3 4 5 6

① Series
(Lubricator Unit)

② Body Size
8 : 1 1/4, 1 1/2
9 : 2

③ Thread
Blank : Rc
N : NPT
G : G(PF)

④ Port Size
12 : 1 1/4
14 : 1 1/2
20 : 2

⑤ Accessory Option

Blank : None
B : Bracket

⑥ Bowl

Blank	Polycarbonate
M	Metal bowl with sight glass

Specifications

Port size	PL 8	1 1/4, 1 1/2
	PL 9	2
Fluid	Pressed Air	
Max.operating pressure(MPa)	10bar (1.0MPa)	
Proof pressure(MPa)	15bar (1.5MPa)	
Ambient and fluid temperature (°C)	-5~60(With no freezing)	
Recommended fluid	ISO VG32(Class 1 turbine oil)	
Material of bowl	Polycarbonate (Option : ALDC)	