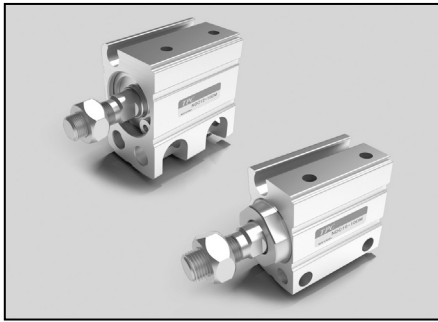


NDC Series

Direct mount cylinder of compact type / Bore Size: Ø4, Ø6, Ø8, Ø10, Ø12, Ø16, Ø20

Actuator
Cylinder

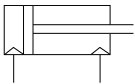
NDC Series



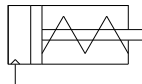
- Design of space saving type
(Compared with existing products,
the volume decrease reaches up to
maximum 50%)
- Minimum realized stroke (4mm)
(Auto switch can be equipped.)
- Attachment from four directions
(front, back, left and right) is
possible.

Marking symbol

Double-acting
single rod



single-acting
single rod



How to Order

NDC D 04 — 10 D M — W10V S

1 2 3 4 5 6 7 8

1 Direct Mount Cylinder

2 Magnet

Blank : None
D : Built-in magnet
(Ø4 magnet is not available)

3 Bore Size

04 : 4mm
06 : 6mm
08 : 8mm
10 : 10mm
12 : 12mm
16 : 16mm
20 : 20mm

4 Stroke

5 Acting

D : Double-acting
S : Single-acting & forward
motion type

6 Thread

Blank : Female thread
M : Male thread

7 Auto Switch

Blank : None
W10V : Solid State Switch
(10mm Vertical type)

8 Number of Switches

Blank : 2 pcs.
S : 1 pc.

■ Cautions by product

Be sure to have a full
understanding before use
and refer to safety cautions
and common cautions.

Tube internal diameter (Ø)		Stroke (mm)													
		4	5	6	8	10	15	20	25	30	35	40	45	50	
04	Double-action type	●		●	●	●	●	●							
	Single-action type	●		●											
06	Double-action type	●		●	●	●	●	●	●						
	Single-action type	●		●	●										
08	Double-action type	●		●	●	●	●	●	●						
	Single-action type	●		●	●	●									
10	Double-action type	●		●	●	●	●	●	●						
	Single-action type	●		●	●	●									
12	Double-action type		●			●	●	●	●						
	Single-action type		●			●									
16	Double-action type		●			●	●	●	●						
	Single-action type		●			●									
20	Double-action type		●			●	●	●	●	●	●	●	●	●	
	Single-action type		●			●									

Standard specification

Tube internal diameter (mm)		4	6	8	10	12	16	20
Fluid in use		Air						
Operating method		Double-acting type / Single-acting type						
Guaranteed inner pressure (MPa)		1.05 (10.7 kgf/cm ²)						
Minimum pressure for use (MPa)	Double-acting type	0.15			0.1	0.07		0.05
	Single-acting type	0.35	0.3		0.2	0.25		0.18
Maximum pressure for use (MPa)		0.7 (7.1 kgf/cm ²)						
Temperature of surroundings and fluid in use		5°C ~ 60°C						
Cushion		None				Rubber cushion		
Fueling		None						
Speed of piston in use		50~500 mm/s						
Allowable tolerance of stroke length		±0.5 0						
Installation		Penetrating hole						