



TPC Linear Motor

■ High speed (3m/sec with 1micron resolution)

The maximum speed of a linear motor is limited only by the bus voltage and the speed of the control electronics.

■ High precision

The accuracy, resolution, and repeatability of a linear motor driven device is controlled by the feed back device.

■ Fast response

The response rate of a linear motor driven device can be over 100 times faster than that of a mechanical transmission device.

■ Stiffness

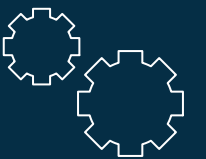
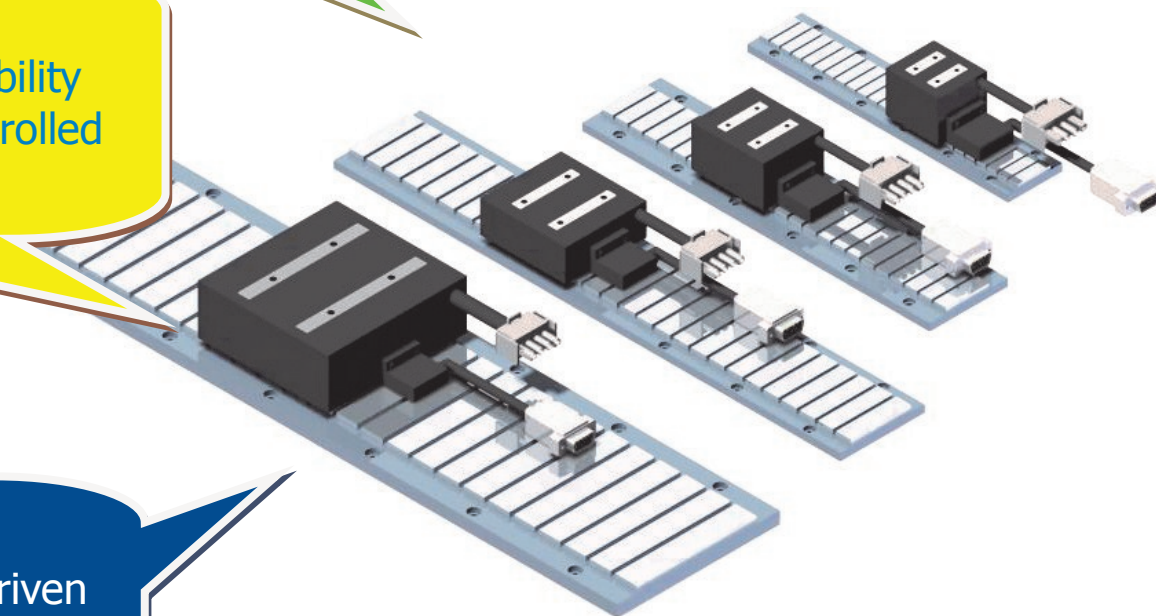
Since there is no mechanical linkage, increasing the stiffness is simply a matter of gain and current.

■ Zero backlash

Without mechanical transmission components, there is no backlash.

■ Maintenance Free Operation

The linear motors of today have no contacting parts, there is no wear on these part.



Web page

<http://www.tpcpage.com>
Please [click here](#) to download the catalog of TPC linear motor.



Contact information

Contact person : Jimmy Cho

Email: jimmy@tanhay.com

Tel : +82-2-2691-8888

Fax : +82-2-2699-2225

South Korea.



■ TPC Technology

- Subminiature motor.
- Double sided linear motor.
- Customized linear motor.
- Magnet moving motor.



■ TPC Manufacturing

- Customized coil production.
 - Customized epoxy molding.
 - Customized magnet plate production.
- (Skew array / tubular / halbach array)

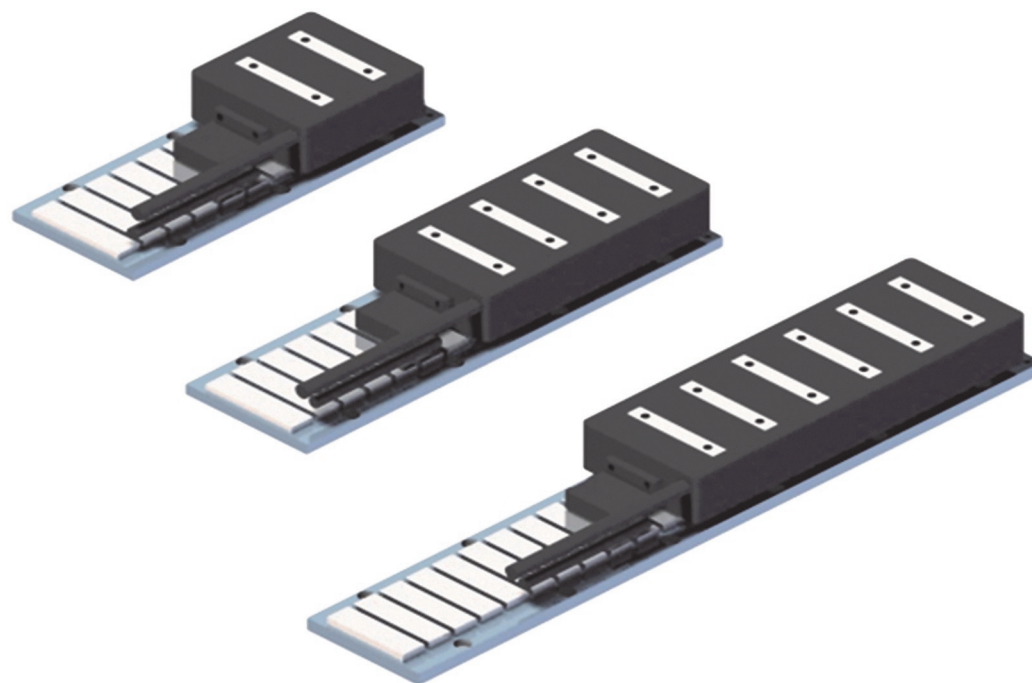


Please [click here](#) to download the catalog of TPC linear motor.

F series

Core type AC Linear Motor

FMIC / FMI / FSM / FMD / FLA / FLB



■ Special features

- Various 25 model line up (Max thrust force range: 8~3,195N).
- Sturdy epoxy mold structure of motor.
- Superior speed ripple : minimized cogging.
- Compact size with high density coil.
- Various common drives applicable.
- CE certificate.
- Competitive price.

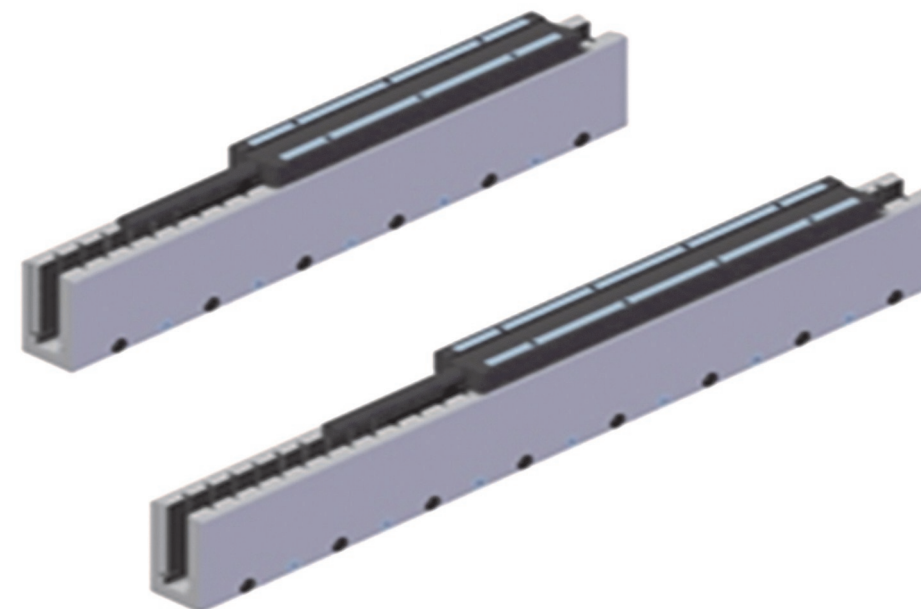
■ Applications

- Semiconductors and FPD equipment.
- Automated optical inspector.
- High speed conveyer lines.
- High speed and precise production lines.

G series

Coreless type AC Linear Motor

GMD / GLA



■ Special features

- Zero cogging force.
- Superior speed ripple, no noise and vibration.
- Good deceleration with light operator mass.
- Integral molding structure of operator.
- Various common drivers applicable.
- CE certificate.
- Competitive price.

■ Applications

- Semiconductor and FPD equipment.
- High speed and precise inspector.