



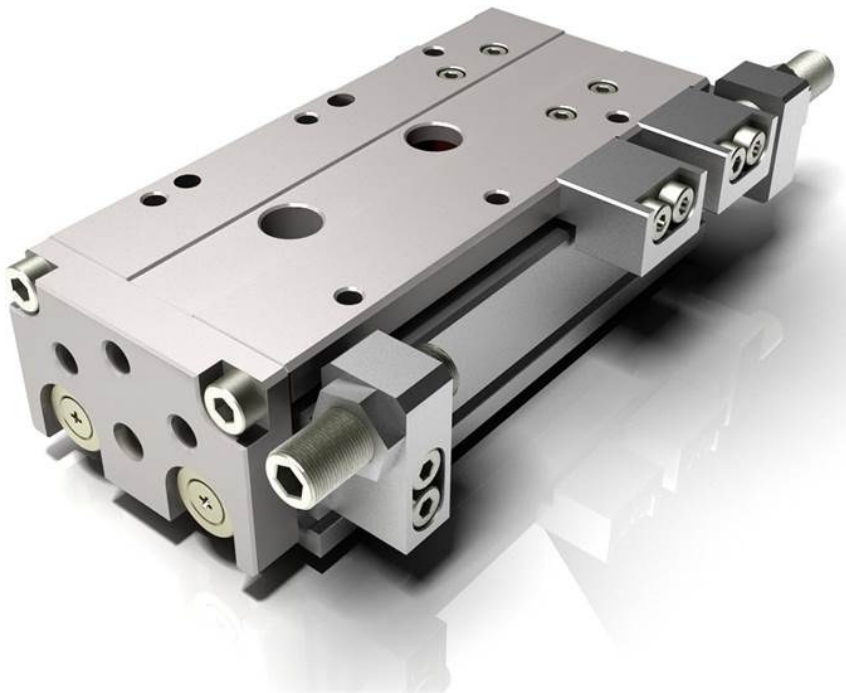
TPC Mechatronics Corp.



Solution Innovation

News Letter No.201306-1

1. New launching of NLPD Ø6

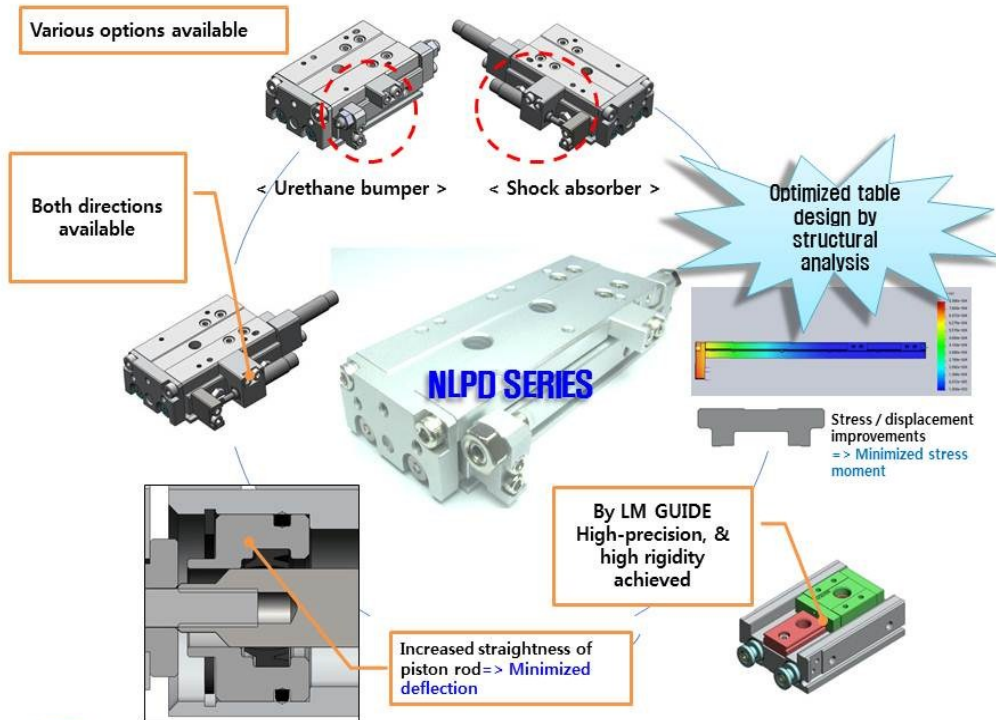


Product Features

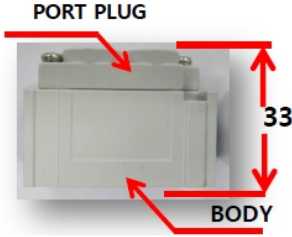
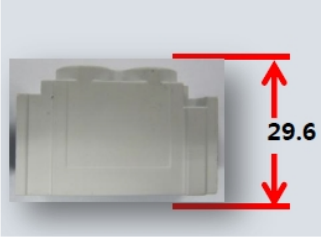
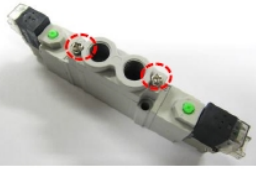

- High strength and precision with adopting the linear guide circular type.
- Increased attaching surface and improved mounting stability.
- Various options available.
- Improved output by dual cylinder.



New
Linear
Precision
Double Rod
Cylinder



2. Integrated port plug of DV3000 valves

Items	Before improvement (BODY, PORT PLUG Detachable)	After improvement (BODY& PORT PLUG Integrated)	Remarks
Dimensions	 <p>PORT PLUG</p> <p>33</p> <p>BODY</p> <p>29.6</p>	 <p>29.6</p>	The length and width (46.6 X 15mm) are the same as previous model.
Assembly shape	 <p>Combining with the PORT PLUG BOLT.</p>	 <p>BODY & PORT PLUG Integrated</p>	
Material and Weight	Material: Zinc (BODY + PORT PLUG) Weight: 96g	Material: Zinc (Integrated BODY) Weight: 84g	12g reduced
Improvements	Lighter and better durability		

Homepage: www.tpcpage.com

TEL: +82-2-2691-8888. FAX: +82-2-2699-2225.

US customer service call center: 562-946-8459

E-mail: jimmy@tanhay.com

Our priority is enhancing

the Customer's Productivity and

Resolving Their Problems !

 **TPC Mechatronics Corp.**